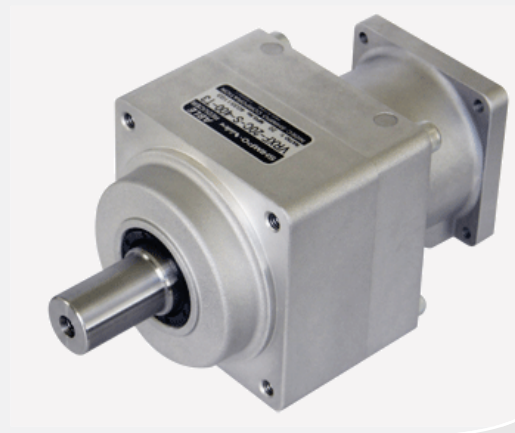


VRXF Series

- New gear design with a fully-complementing roller bearing structure for increased torque transmission
- Maximum high input speed at 6,000 spm
- High-performance grease for higher efficiency
- 3 backlash levels available
- Compatible with all types of servomotors with the use of adaptors
- Grease replacement is not required throughout the product's lifetime; can be installed at any desired angle without worry of leakage.

- Reduction Ratio : 1/3-1/81
- Backlash (3 Types) :
PB: 0.05° (below 3 min)
LB: 0.08° (below 5 min)
Standard: 0.25° (below 15 min)
- * LB: 166° (below 10 min) for Frame B in the spec table



VRL Series

- Industry standard mounting dimensions
- Large variety of frame sizes and ratios
- Thread-in mounting style
- Best-in-class backlash (<5 arc-min)
- Ships in 48 hours in standard frame sizes

APPLICATION

- An excellent choice when very requiring good accuracy and re-liability at an exceptional value
- These planetary gear-head are the perfect solution for servomotors applications such as gantries, injection-molding machines, pick & place automation and linear slides

